

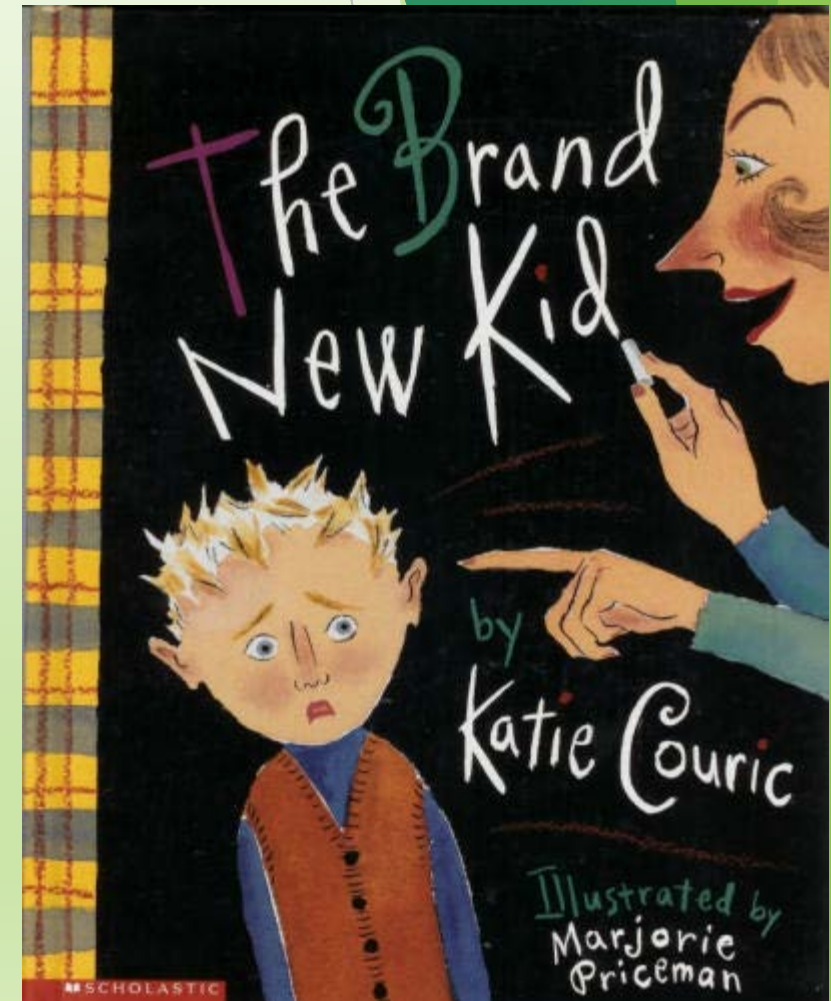


We're All In This Together!

Building a Positive School Community

The Brand New Kid

- Have you ever been the “Brand New Kid” somewhere?
- “Why is it important to be kind to all people with whom you live, work, and play?”
- Whose job is it to take the first step? The new kid, or the kids who have been there awhile? Why? What can each do to make it easier?



Being New Isn't the Only Time Someone Might Feel Different

1. What are some ways people might feel different than others (different nationality, different abilities, different gender, different clothes, new to a situation)?
2. Try to put yourself in the shoes of someone different from you. What are the positive and negative things about your differences?
3. What does respect for differences look like?

Define:

- *empathy*
- *tolerance*
- *inclusion*



What actions can we take to make sure “All are welcome here”?



Communication Tips: How to Welcome New People

What are three things you can say to welcome someone?

Tips for Respectful Conversation:

1. Treat people with respect – how you want to be treated.
2. Listen first and seek to understand, not just wait for your turn.
3. Think about what they said; repeat it back in your words.
4. It's okay to disagree, but not okay to be mean. Say what you think and feel with respect.
5. Accept that we are not the same, but we can understand and learn from others.
6. Look at what you have in common; let go of things that aren't important.

Welcoming Walls

1. Make a list of welcoming words and quotes that inspire and encourage kindness and respectful language.
2. Create a poster with words and an image that promotes an inclusive and accepting school culture.
3. Display posters around the school.

W
E
L
C
O
M
E

Reflection

1. What impact did the posters and biography worksheets have on your fellow students?
2. How do you feel about your school community after doing this project?
3. How did you feel when you saw positive interactions?