

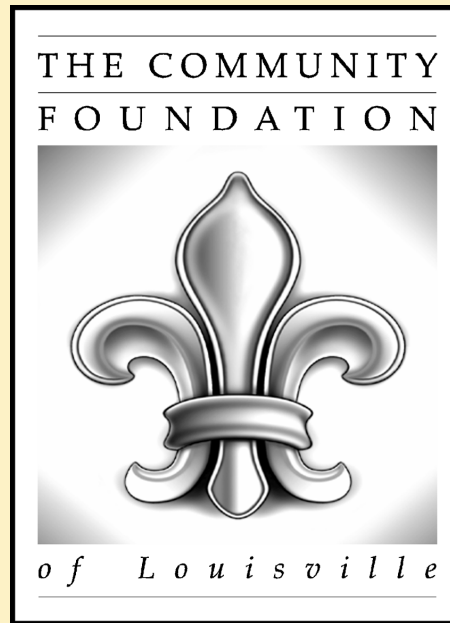
HELPING YOU MAKE A DIFFERENCE . . . FOREVER.



THE COMMUNITY FOUNDATION OF LOUISVILLE

what

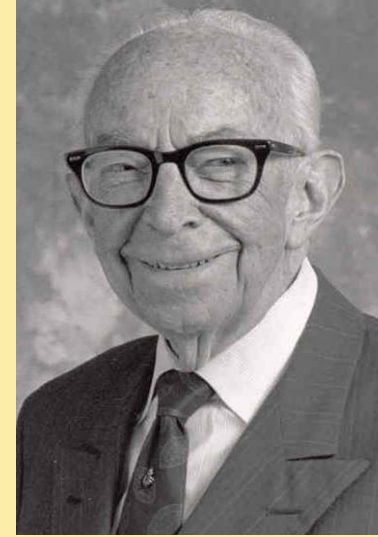
**is The Community
Foundation of Louisville?**



Our Mission

To advance philanthropy by:

- serving the charitable interests of donors
- enabling increased charitable giving
- improving communities by being a permanent philanthropic resource for current & future needs



The Community Foundation of Louisville -

three special features

feature one

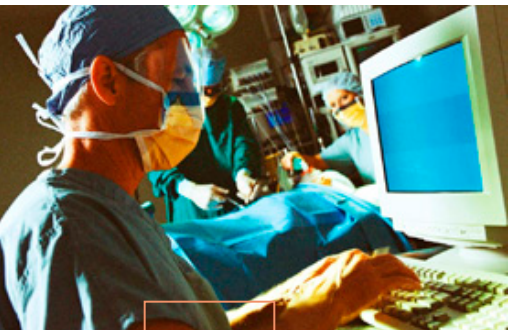
Personalized service



Makes giving **easy, flexible, meaningful**

- › **Customize** giving approaches to match personal interests and tax planning needs
- › Help people create **personal legacies** via named funds
- › Offer **involvement** in recommending uses of a gift
- › **Local insight** across the region through affiliate boards
- › Provide the option to give **anonymously**

Creating solutions that fit every situation



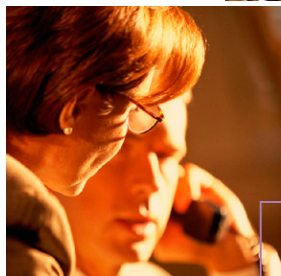
Experience you can **trust**

- › Team of **local professionals** and **volunteer community leaders**
- › Administer over 1,100 charitable funds **according to donors' interests and goals**
- › Partner with **professional advisors** for creative and effective approaches to giving.
- › Facilitate **complex forms** of giving

Making a difference where it is needed most

feature three

Knowledge



Knowledge of the community and charitable giving techniques

- › **Overview** of community needs
- › Provide **information on local programs**
- › **Suggest solutions** for complicated gifts
- › **Direct** grants and resources to appropriate areas for Community Grantmaking

Our business is building community

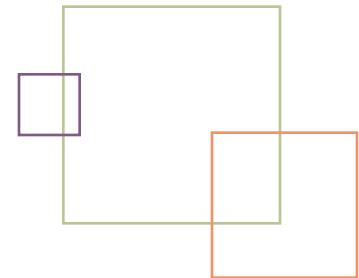
foundation facts

Our vital statistics



The Community Foundation of Louisville

- › More than **1,100** funds
- › Over **\$250 million** in assets
- › More than **\$26 million** in annual grants
- › Over **\$320 million** in grants since 1984
- › **Affiliates** in different areas of the state



Our Board of Directors

Engaged community leaders

Danny McMahan, *Board Chair*

Jerry Greenwell, *Vice Chair*

Mimi Zinniel, *Secretary*

Sonny Altman

Matthew Barzun

Cara Bernosky

Bonita K. Black

Carl Brazley

Frances Brennan, MD, PhD

Diane Cornwell

Laura Douglas

Adel Elmaghraby

Michael French

Jackie Gibbs

Audwin Helton

Deborah Moessner

Elizabeth S. Peabody

Bill Price

Sharon A. Receveur

Susan Moss

Yung Nguyen

Terry L. Singer, PhD

Jeff Yussman



tools

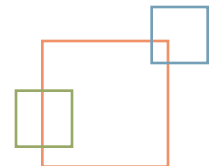
for giving

Charitable funds



- › **Unrestricted Fund**
Meeting ever-changing community needs
- › **Field of Interest Fund**
Addressing needs in an important area of community life: arts, AIDS, aging, at-risk youth...
- › **Designated Fund**
Directing gifts to specific nonprofit agencies
- › **Donor Advised Fund**
Involving donors in the use of their gift
- › **Scholarships**
Can support a variety of studies or schools
- › **Depository Funds (non-endowed)**
to meet short-term, immediate charitable goals

*You can create a named fund
in any of these categories.*



tools

for giving

Charitable instruments



- › **Outright Gifts**
Give cash, stocks, real estate or other assets
- › **Bequests**
Designate a portion of an estate
- › **Life Insurance**
CFL as beneficiary of new or existing policy
- › **Retirement Assets**
CFL as beneficiary of IRA, 401(k) or other retirement plans
- › **Charitable Gift Annuity**
Annuity contract pays client for life and charitable fund commences grants upon death
- › **Charitable Remainder Trust**
Trust pays beneficiary for life and then assets transfer to community foundation

We accept a wide variety of assets.

About the Artemis Fund.

The Artemis Fund

a philanthropic partnership



- › trimester-course at Kentucky Country Day School
- › students learn about philanthropy, raise money and recommend grants
- › direct relationship with donors and grant recipients
- › manage application and selection process



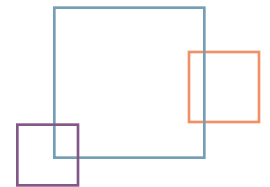
THE COMMUNITY FOUNDATION
OF LOUISVILLE

- › “back office” support
- › investment management
- › advise Artemis Fund board
- › receive and process any new gifts



Philanthropic goals:

- › Create **partnership** with Community Foundation
- › Hands-on **experience** in soliciting charitable dollars
- › Establish grantmaking **priorities**
- › **Research** opportunities and recommend charitable **grants** as a group
- › Learn fiduciary **responsibility**



Artemis Fund

Philanthropy in action

Investment Options

- **Fund A (Balanced Fund)** * Artemis invested here
65% stocks, 35% bonds
- **Aggressive Fund**
85% stocks, 15% bonds
- **Socially Responsible Fund**
up to 75% stocks, balance in bonds
- **Bond Fund**
100% bonds
- **Other Investment Relationships**
for larger funds



Artemis Fund

Philanthropy in action

<u>Year Ended</u>	<u>Gifts Received</u>	<u>Distributions Made</u>	<u>CFL Fees</u>	<u>Investment Income</u>	<u>and Realized Appreciation</u>	<u>Ending Balance</u>
6/30/2002	15,829.00	(2,985.00)	(30.25)	62.29	(806.66)	12,069.38
6/30/2003	22,240.00	(5,140.00)	(199.30)	463.45	1,871.60	31,305.13
6/30/2004	15,446.60	(3,479.00)	(385.65)	693.50	3,491.19	47,071.77
6/30/2005	12,602.00	(7,700.00)	(501.30)	1,061.91	1,807.19	54,341.57
6/30/2006	14,030.00	(8,750.00)	(583.35)	1,408.58	1,745.44	62,192.24
9/30/2006	13,780.00	(4,500.00)	(702.10)	1,724.72	8,475.48	82,605.29
9/30/2007			(200.56)	458.90	1,376.61	82,605.29
Totals	93,927.60	(32,554.00)	(2,602.51)	5,873.35	17,960.85	82,605.29

Artemis Fund

Philanthropy in action



Fund Summary

Principal Received	\$ 93,927
Net Investment Income	\$ 5,873
Appreciation	\$ 17,960
CFL Fees	-\$ 2,602
Grants	-\$ 32,554
Balance as of 9/30/07	\$ 82,605



Accomplishments

- › **2005 Youth Philanthropist of the Year** from the Greater Louisville Chapter of the Association of Fundraising Professionals
- › **2004 Leading Edge award** from the National Association of Independent Schools for Curriculum Innovation
- › **62 students** have served as trustees in last five academic years; **this year 13 students** are enrolled in the course
- › Support from over **188 individuals, foundations and corporate donors**
- › Grants totaling more than **\$32,500** to date