

Name: \_\_\_\_\_

## Reproduction in Plants: Dissection of a Flower

Go to <http://urbanext.illinois.edu/gpe/case4/c4facts1a.html> and complete the following statements. Label the parts of a flower on the back of this sheet as you work.

<u>Male Parts</u>	
The male parts of the flower are called the _____.	
The _____ is the yellow, pouch-like part inside of the flower that holds pollen grains.	The _____ is the fine hair-like stalk that supports the anther.
Pollen grains are the plant's _____ cells ( <i>not on website</i> ).	

<u>Female Parts</u>		
The female parts of the flower are called the _____.		
The _____ is the part of the plant, usually at the base of the flower, that has the seeds inside.	The _____ is the sticky bulb that you see in the center of flowers and is the part where the pollen lands and starts the fertilization process.	The _____ is the long stalk that supports the stigma.
The _____ is the part of the ovary that becomes the seeds.		The ovule are the plant's _____ cells ( <i>not on website</i> ).

### More parts to the flower

1. The plant uses the petals of the flower to \_\_\_\_\_.
2. The sepal \_\_\_\_\_ before it opens.
3. An imperfect flower has \_\_\_\_\_, but not both in the same flower.
4. Flowers that have both male and female parts are known as \_\_\_\_\_.

### Fertilization

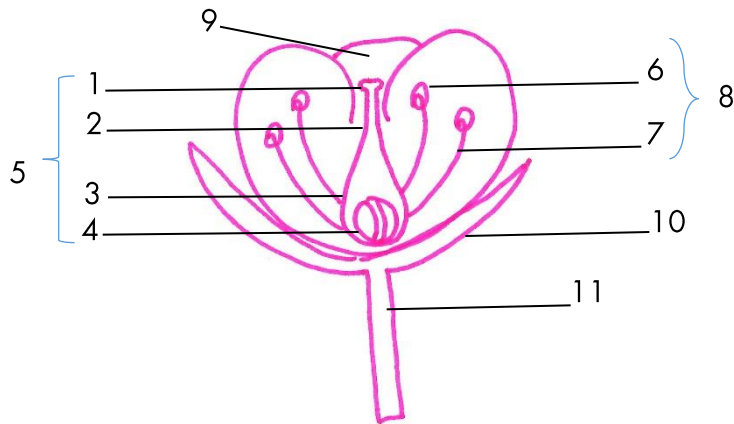
1. When pollen lands on the stigma of a flower, \_\_\_\_\_ has occurred.
2. The pollen then travels down the \_\_\_\_\_ and into the \_\_\_\_\_ where fertilization occurs.
3. The fertilized \_\_\_\_\_ becomes the seed and the ovary becomes the \_\_\_\_\_.
4. Explain how flowers achieve pollination when they can't move. Use complete sentences.



### Asexual Reproduction

1. Plants are called \_\_\_\_\_ when they produce spores instead of seeds.
2. When plants reproduce from asexual reproduction it is sometimes called \_\_\_\_\_ because every new plant is exactly like the parent.

	Asexual or Sexual Reproduction?
Pollen from the anther of one flower lands on the stigma of another flower.	
Pollen from the anther of one flower lands on the stigma of the same flower.	
Plants that do not produce flowers produce spores in a type of vegetative reproduction.	



Label the Parts of the Diagram

- |           |           |
|-----------|-----------|
| 1. _____  | 6. _____  |
| 2. _____  | 7. _____  |
| 3. _____  | 8. _____  |
| 4. _____  | 9. _____  |
| 5. _____  | 10. _____ |
| 11. _____ |           |

